



# PT Series

Tank Top Filters



ENGINEERING YOUR SUCCESS.

# PT Series

## Applications

The PT series filter is available in two diameters and three lengths for flow ranges from 5-50 gpm. The PT2 and PT4 filter cartridges utilize Quantumfiber media in 2, 5, 10 and 20 microns for the industry's best particle removal efficiency and retention.

This unique design simply threads into a ported weld ring or flange, which can be bolted to a metal reservoir.

The disposable filter cartridge is a single-piece construction, which incorporates the nylon cover and integral 25 psi bypass valve. The flow path is inside-out and requires no special tools for service.

This concept assures minimal installation costs with the least space requirements for return line applications.



### Typical Applications

- Turf Maintenance
- Material Handling
- Aerial Lifts
- Fan Drive

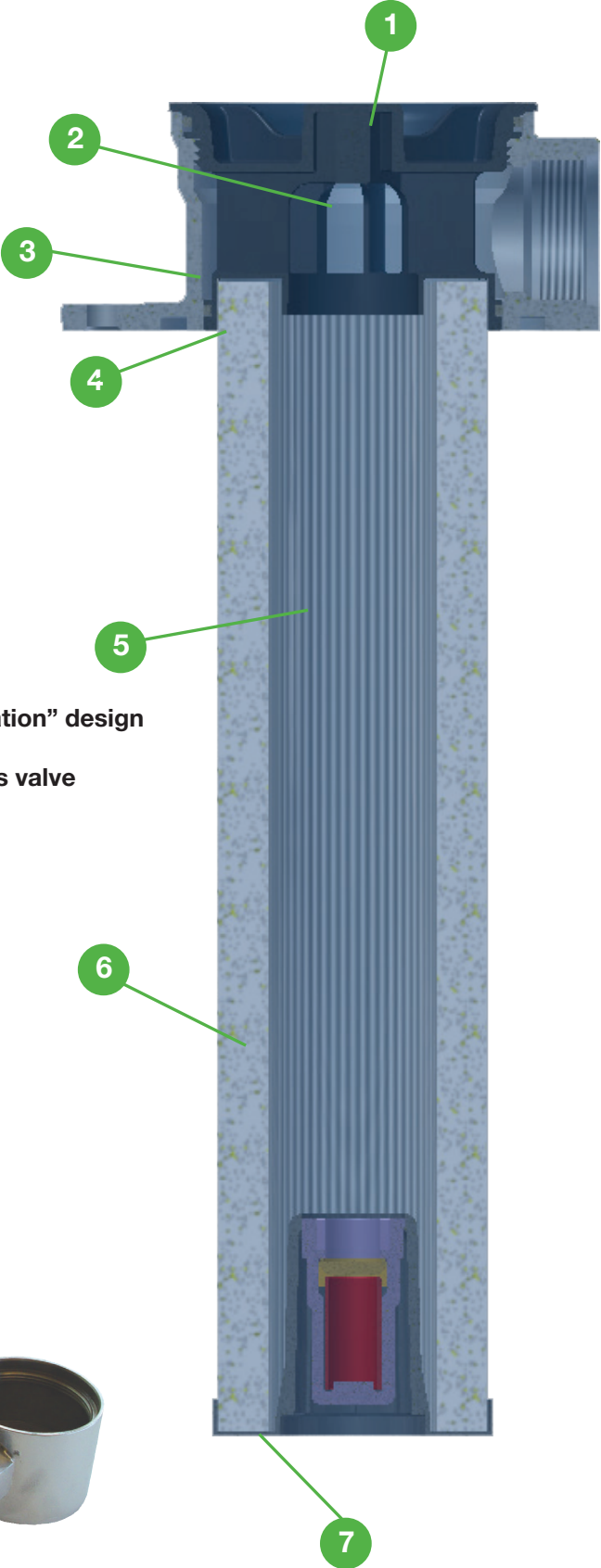


The PT Series filter combines high efficiency Quantumfiber filtration with low cost installation.

# PT Series

## Features

- 1 Easy element assembly removal
- 2 Unique high flow top end cap
- 3 Lightweight cast aluminum head
- 4 Filter element assembly
- 5 Bowl-less, inside-out flow
- 6 Downstream element support with “no aeration” design
- 7 Solid bottom endcap with integrated bypass valve
- 8 Low profile tank top design





# PT Series

**Filter Element**  
Premium original equipment performance every time

**Tank Top, Bowl-Less Design**  
Reduces weight  
Significant cost savings over filters with bowls

**Bottom Endcap Integrated Bypass Valve**  
New bypass valve with every element change  
Insures reliable performance

**Inside-Out Element Flow Path**  
Contamination contained within the element  
No system contamination during element servicing

**No Aeration Design**  
Oil cascades down the perforated outer support core  
No system aeration

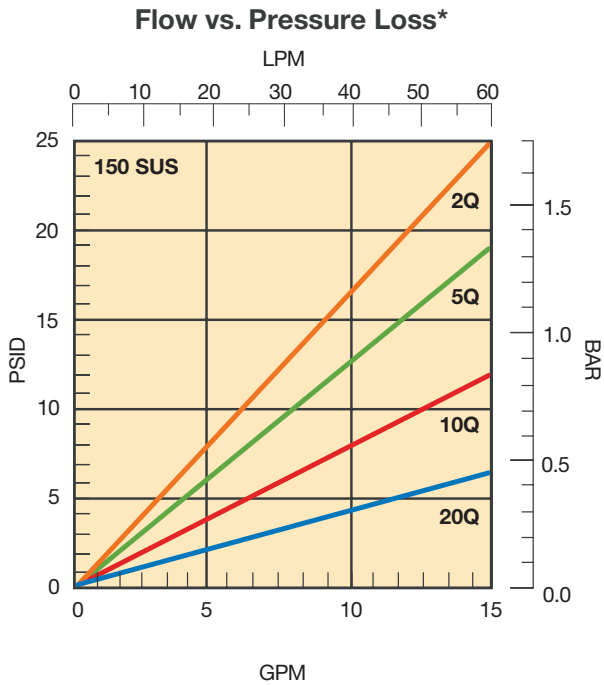
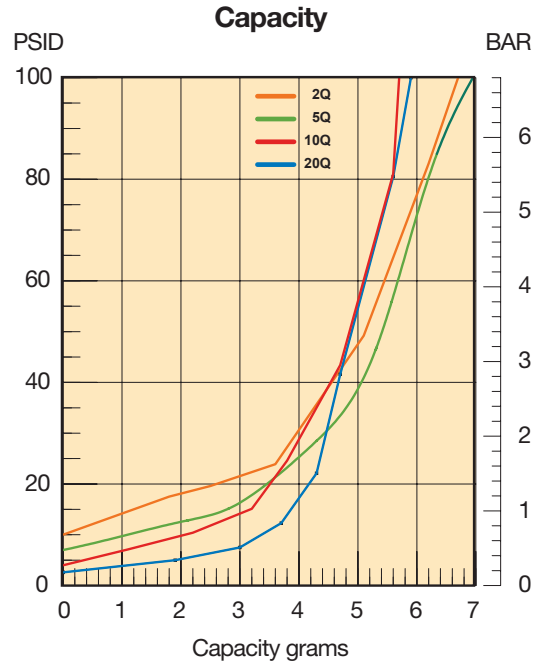
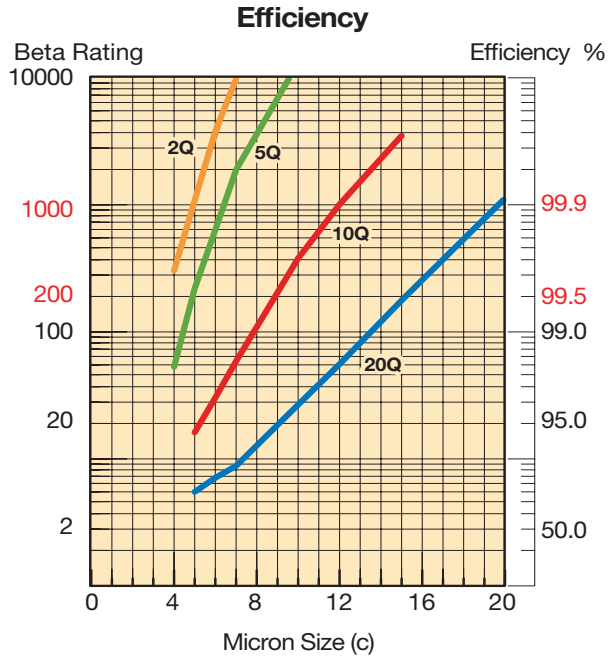
**High Flow, Low Pressure Drop Top Endcap Design**  
Long element life  
Lower maintenance costs

**Premium Microglass Media**  
Superior dirt holding capacity and efficiency  
Less maintenance and downtime



# PT Series

## PT2-1 Element Performance

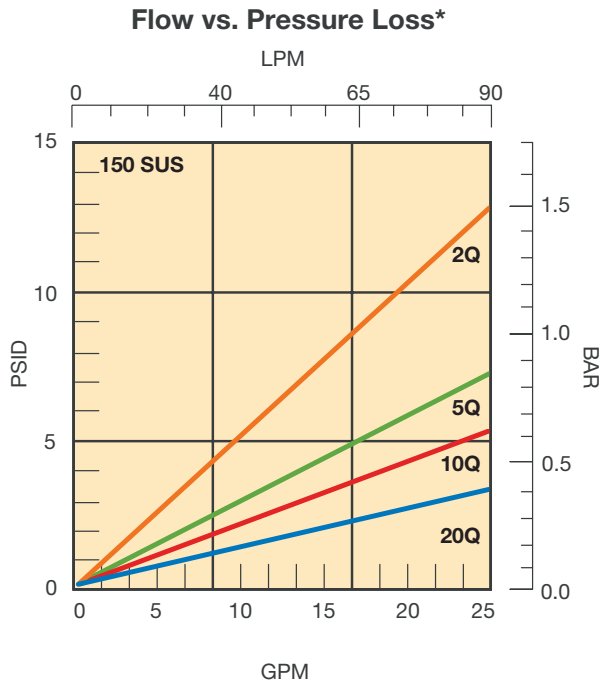
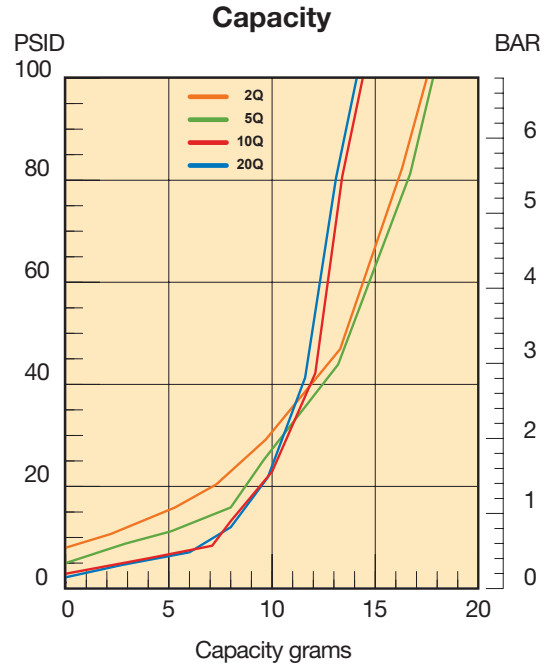
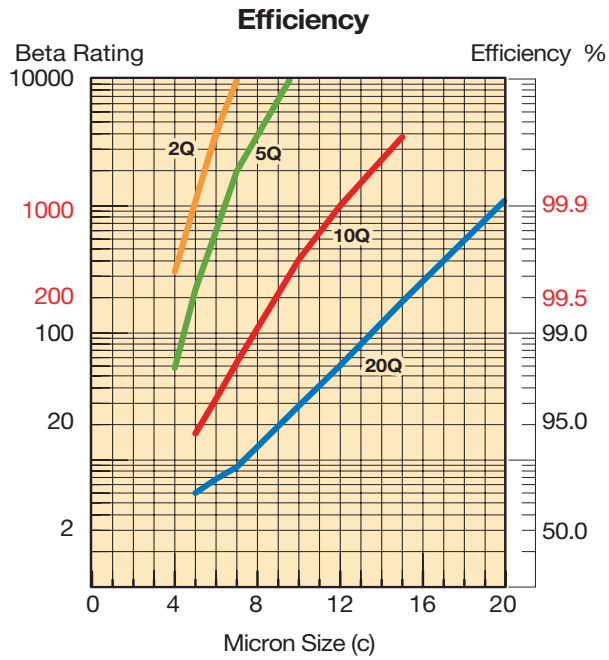


Results typical from Multi-pass tests run per test standard ISO 16889 @ 10 gpm to 100 psid terminal - 10 mg/L BUGL. Refer to Appendix for relationship to test standard ISO 4572.

\*Note: Pressure drop calculations are based on SAE-12 porting.

# PT Series

## PT2-2 Element Performance

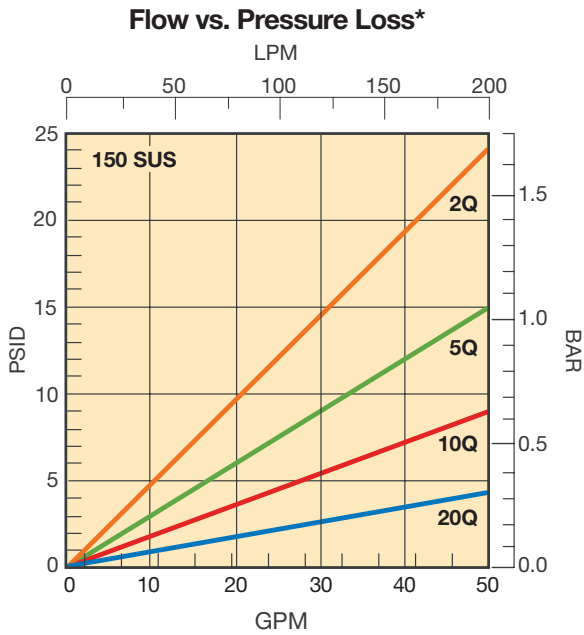
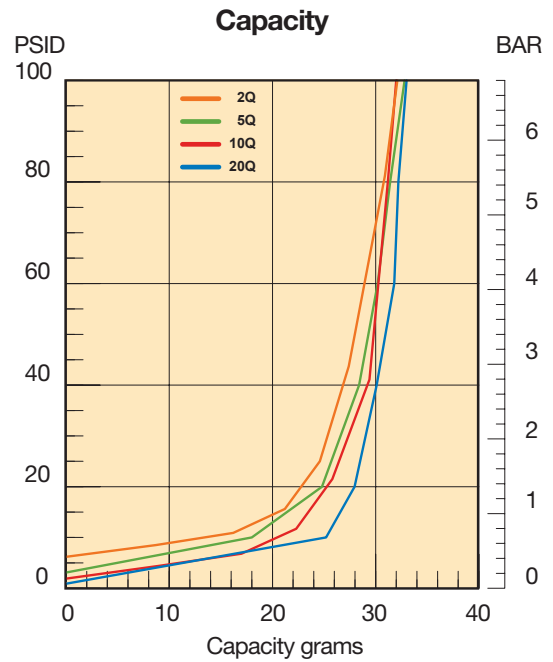


Results typical from Multi-pass tests run per test standard ISO 16889 @ 15 gpm to 100 psid terminal - 10 mg/L BUGL. Refer to Appendix for relationship to test standard ISO 4572.

\*Note: Pressure drop calculations are based on SAE-12 porting.

# PT Series

## PT4-1 Element Performance

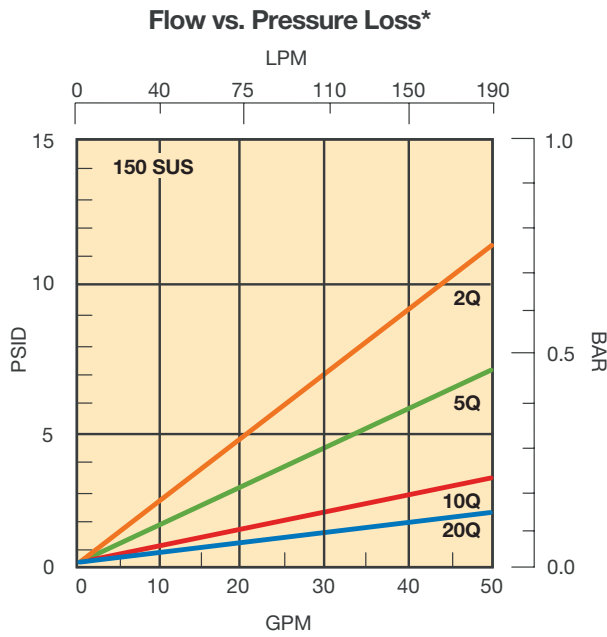
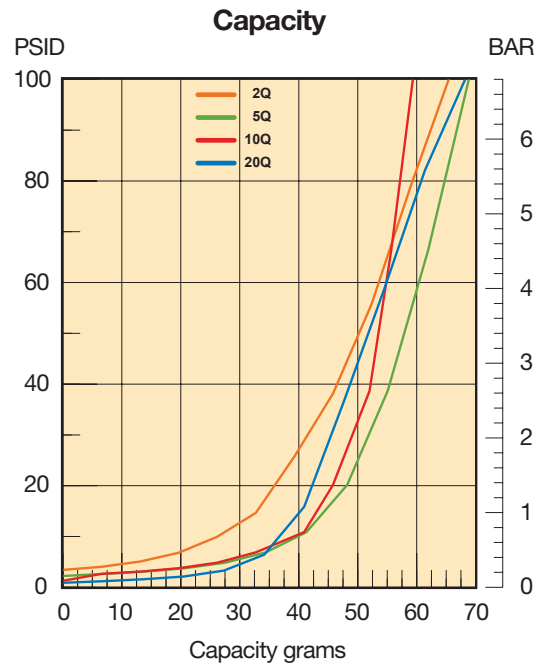


Results typical from Multi-pass tests run per test standard ISO 16889 @ 15 gpm to 100 psid terminal - 10 mg/L BUGL. Refer to Appendix for relationship to test standard ISO 4572.

\*Note: Pressure drop calculations are based on SAE-16 porting.

# PT Series

## PT4-2 Element Performance



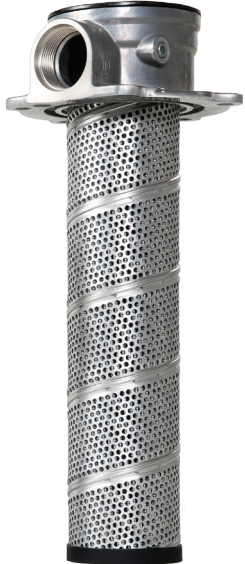
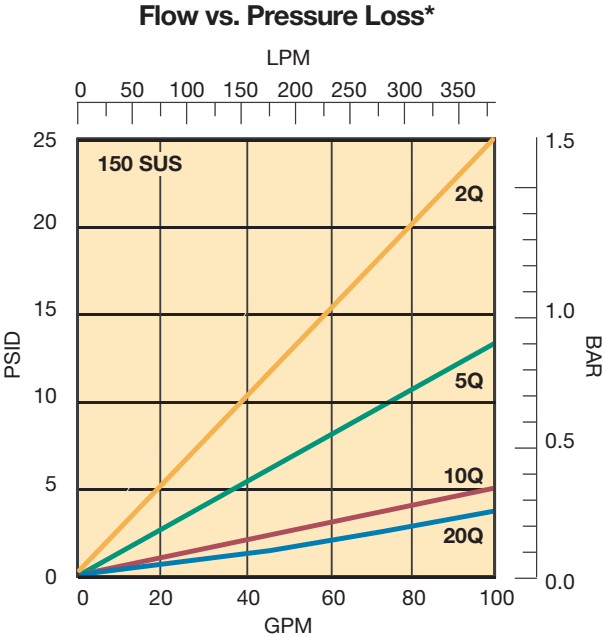
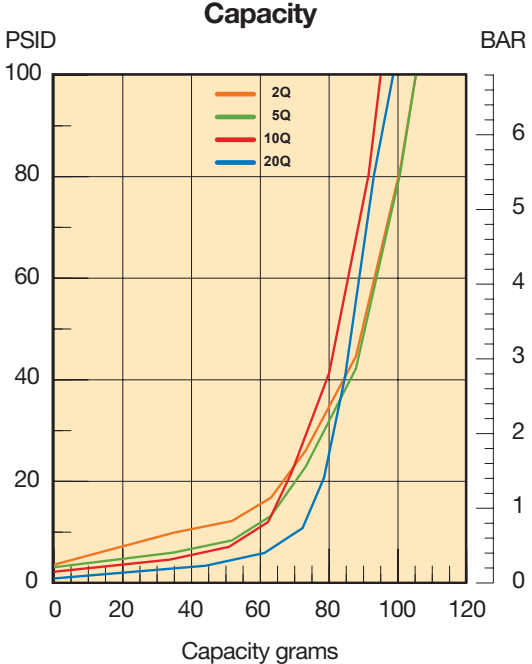
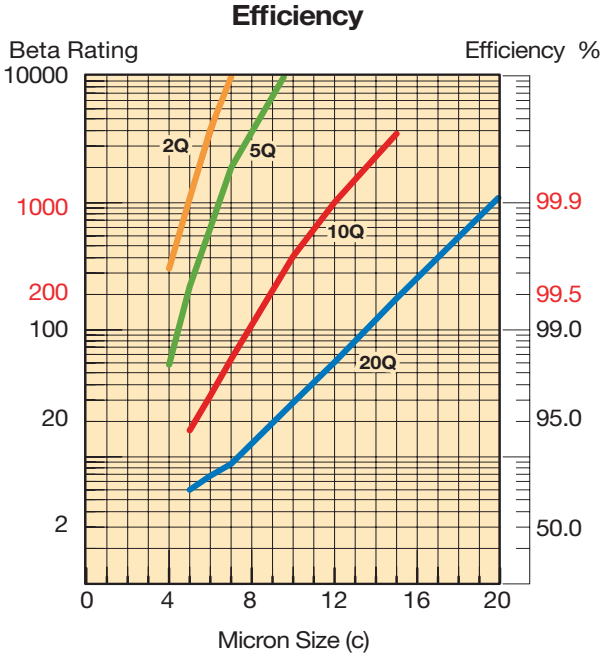
Results typical from Multi-pass tests run per test standard ISO 16889 @ 30 gpm to 100 psid terminal - 10 mg/L BUGL. Refer to Appendix for relationship to test standard ISO 4572.

\*Note: Pressure drop calculations are based on SAE-16 porting.



# PT Series

## PT4-3 Element Performance



Results typical from Multi-pass tests run per test standard ISO 16889 @ 45 gpm to 100 psid terminal - 10 mg/L BUGL. Refer to Appendix for relationship to test standard ISO 4572.

\*Note: Pressure drop calculations are based on SAE-16 porting.

# PT Series

## Specifications - PT2

### Pressure Rating:

Maximum Allowable Operating Pressure (MAOP): 150 psi ( 10.3 bar)

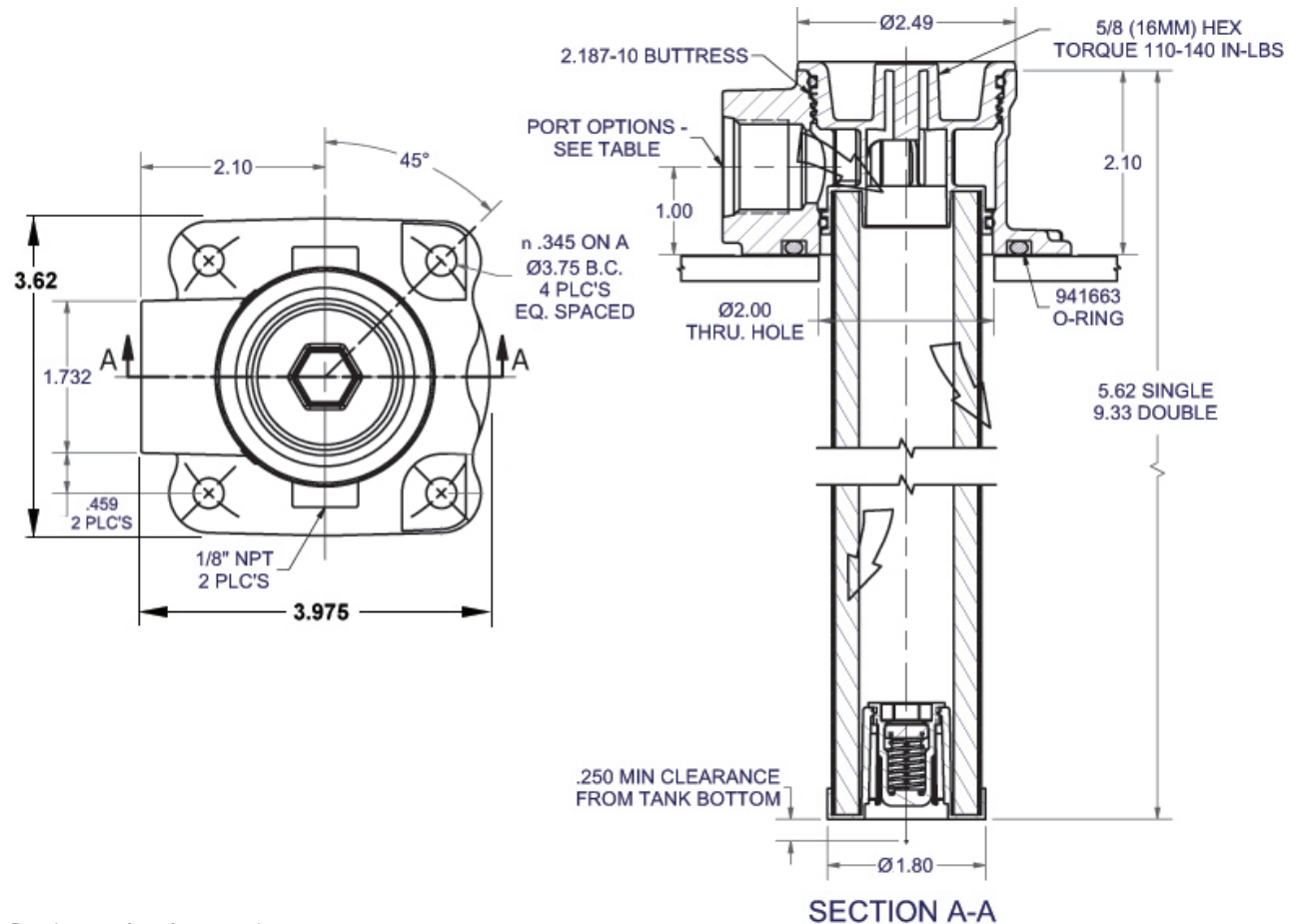
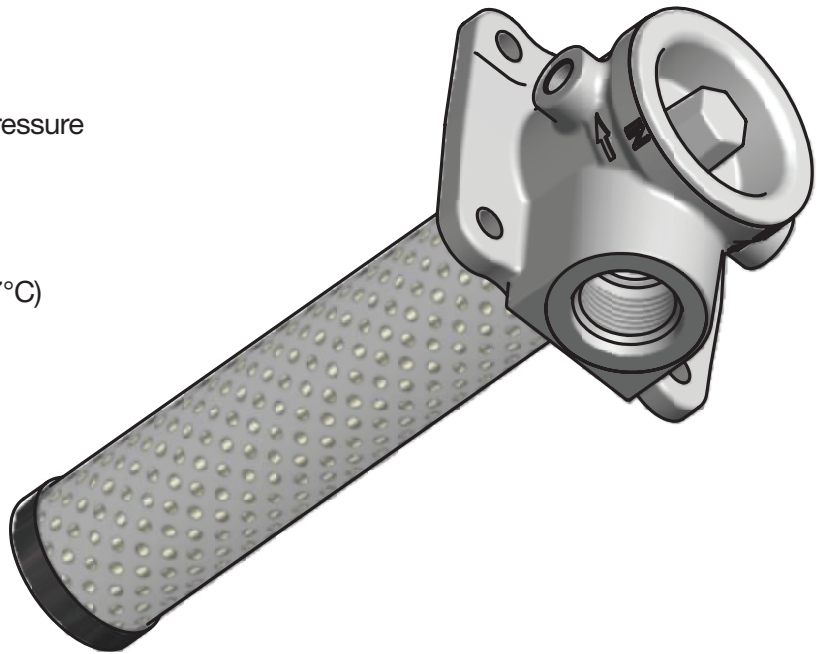
**Element Burst Rating:** 150 psid

### Operating Temperatures:

Buna: -40°F (-40°C) to 225°F (107°C)

### Materials:

Tank Flange: aluminum  
Endcaps: nylon



Drawings are for reference only.  
Contact factory for current version.

# PT Series

## Specifications - PT4

**Pressure Rating:**

Maximum Allowable Operating Pressure (MAOP): 150 psi ( 10.3 bar)

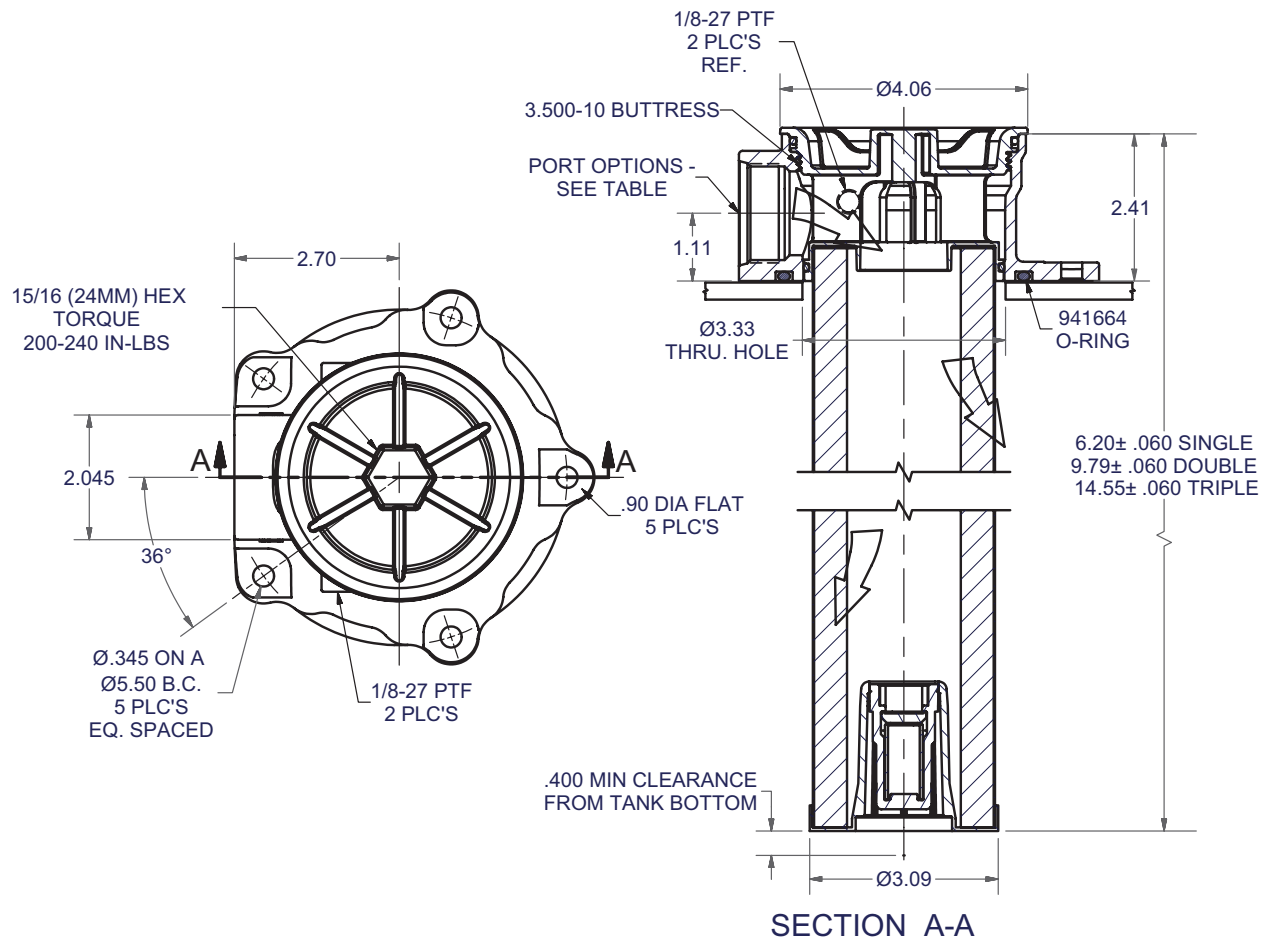
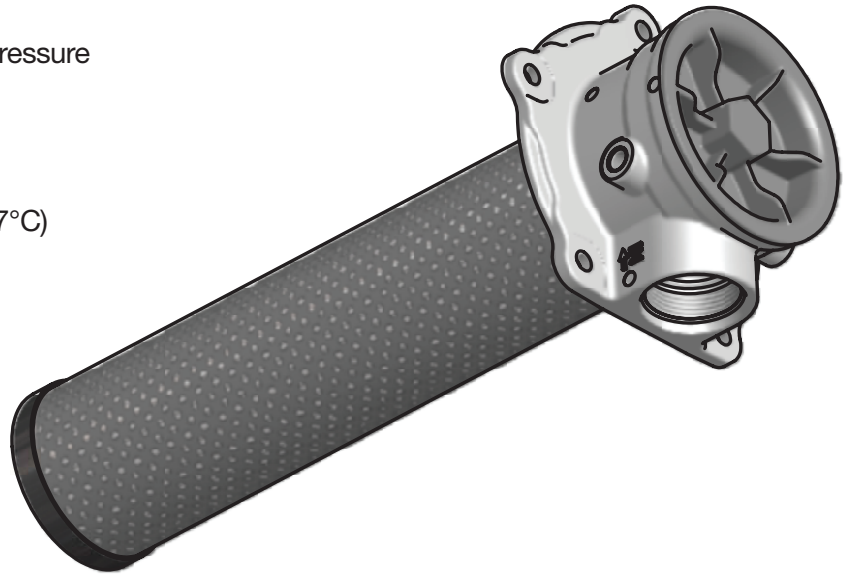
**Element Burst Rating:** 150 psid

**Operating Temperatures:**

Buna: -40°F (-40°C) to 225°F (107°C)

**Materials:**

Tank Flange: aluminum  
Endcaps: nylon

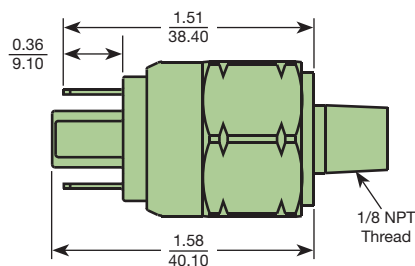
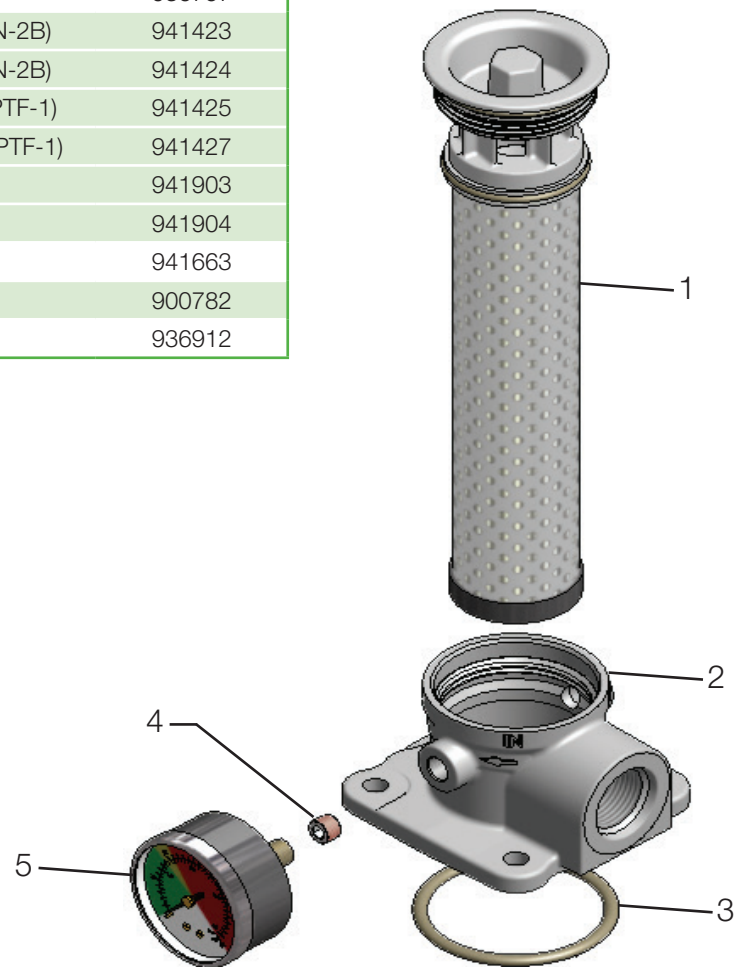


Drawings are for reference only.  
Contact factory for current version.

# PT Series

## PT2 Parts List

INDEX	PART DESCRIPTION	PART NUMBER
1	PT2-1-02Q-25 psid bypass	936750
	PT2-1-05Q-25 psid bypass	936751
	PT2-1-10Q-25 psid bypass	936752
	PT2-1-20Q-25 psid bypass	936753
	PT2-2-02Q-25 psid bypass	936754
	PT2-2-05Q-25 psid bypass	936755
	PT2-2-10Q-25 psid bypass	936756
	PT2-2-20Q-25 psid bypass	936757
2	PT2 DIE CAST SAE-12 (1.062-12 UN-2B)	941423
	PT2 DIE CAST SAE-16 (1.312-12 UN-2B)	941424
	PT2 DIE CAST 3/4" NPT (.750-14 NPTF-1)	941425
	PT2 DIE CAST 1" NPT (1.000-11.5 NPTF-1)	941427
	PT2 DIE CAST G3/4" BSPF	941903
	PT2 DIE CAST G1" BSPF	941904
	3	O-RING
4	1/8-27 PIPE PLUG	900782
5	1/8-27 PRESSURE GAUGE	936912

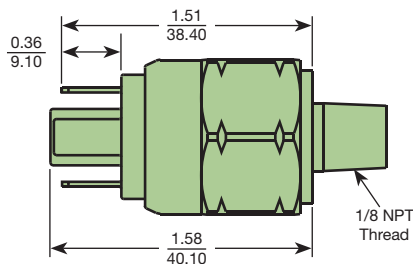
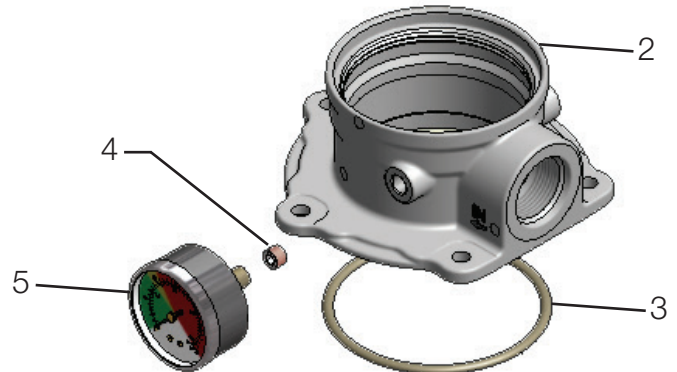
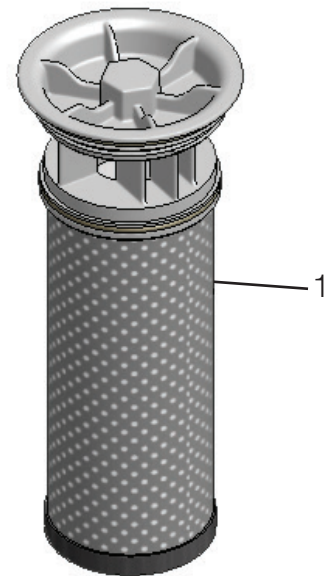


926923  
2-pin normally open switch

# PT Series

## PT4 Parts List

INDEX	PART DESCRIPTION	PART NUMBER
1	PT4-1-02Q-25 psid bypass	936742
	PT4-1-05Q-25 psid bypass	936743
	PT4-1-10Q-25 psid bypass	936744
	PT4-1-20Q-25 psid bypass	936745
	PT4-2-02Q-25 psid bypass	936746
	PT4-2-05Q-25 psid bypass	936747
	PT4-2-10Q-25 psid bypass	936748
	PT4-2-20Q-25 psid bypass	936749
	PT4-3-02Q-25 psid bypass	936876
	PT4-3-05Q-25 psid bypass	936877
	PT4-3-10Q-25 psid bypass	936878
	PT4-3-20Q-25 psid bypass	936879
2	PT4 DIE CAST SAE-16 (1.312-12 UN-2B)	941417
	PT4 DIE CAST SAE-20 (1.625-12 UN-2B)	941448
	PT4 DIE CAST 1" NPT (1.000-11.5 NPTF-1)	941449
	PT4 DIE CAST 1 1/4" NPT (1.250-11.5 NPTF-1)	941450
	PT4 DIE CAST G1" BSPF	941905
	PT4 DIE CAST G1 1/4" BSPF	941906
3	O-RING	941664
4	1/8-27 PIPE PLUG	900782
5	1/8-27 PRESSURE GAUGE	936912



926923  
2-pin normally open switch



# PT Series

## Tank top filters

### How To Order

Select the desired symbol (in the correct position) to construct a model code.

Example:

BOX 1	BOX 2	BOX 3	BOX 4	BOX 5	BOX 6	BOX 7	BOX 8
PT2	1	10Q	B	G	G	S16	1

BOX 1: Filter Series	
Symbol	Description
PT2	Basic Model, 25 gpm
PT4	Basic Model, 50 gpm

BOX 2: Length	
Symbol	Description
1	Single
2	Double
3	Triple (PT4 only)

BOX 3: Media Code	
Symbol	Description
02Q	Quantumfiber, 2 micron
05Q	Quantumfiber, 5 micron
10Q	Quantumfiber, 10 micron
20Q	Quantumfiber, 20 micron

BOX 4: Seals	
Symbol	Description
B	Nitrile
V	Fluorocarbon

BOX 5: Indicator	
Symbol	Description
P	Plugged Ports
G	Pressure Gauge, 25 psi
S	Pressure switch

BOX 6: Bypass	
Symbol	Description
G	25 PSI (1.7 bar)

BOX 7: Ports	
Symbol	Description
	<b>PT2</b>
G12	G3/4" BSPP2
G16	G1 BSPP2
N12	3/4" NPT
N16	1" NPT
S12	SAE-12
S16	SAE-16
	<b>PT4</b>
G16	G1" BSPP2
G20	G1-1/4" BSPP2
N16	1" NPT
N20	1-1/4" NPT
S16	SAE-16
S20	SAE-20

BOX 7: Options	
Symbol	Description
1	None
W <sup>8</sup>	Steel weld ring

#### Notes:

1. The filters include the element you select already installed.
2. When "G12", "G16" or "G20" are selected in Box 7, "P" must be selected in Box 5. BSPP Gauge and Switch are available as separate accessory components.
3. When "W" is selected in Box 8, the PT2 port options are "N12" and "S12"; the PT4 port option is "S16".